

Light efficiency:

41 Lumen/Watt

Light quality:

CRI: 97.3

Color temperature:

3013 K

Output: 610 lm
Peak: 1472 cd
Power: 14.9 W
PF: 0.97



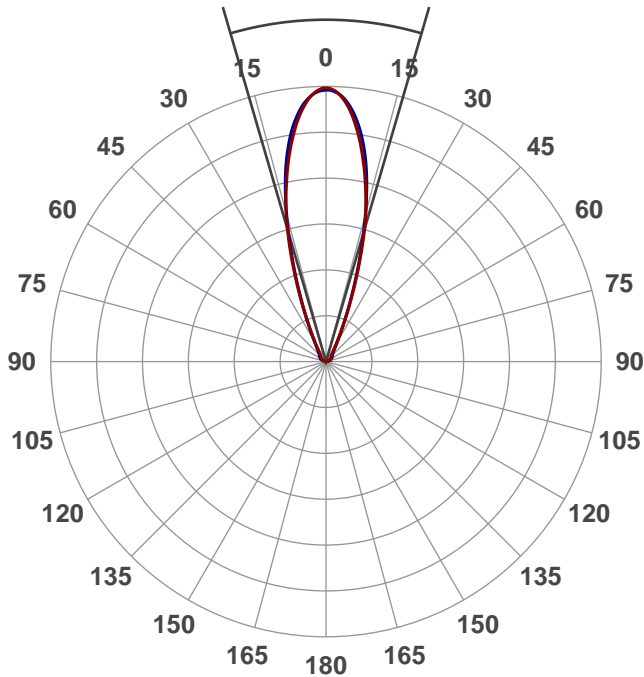
Product name:
811X-930-20-79A

Date and time:
3/3/2017 12:14:31 PM

Item number:
811X-930-20-79A

Additional information:

Beam angle **32.5°** 2 PLANES

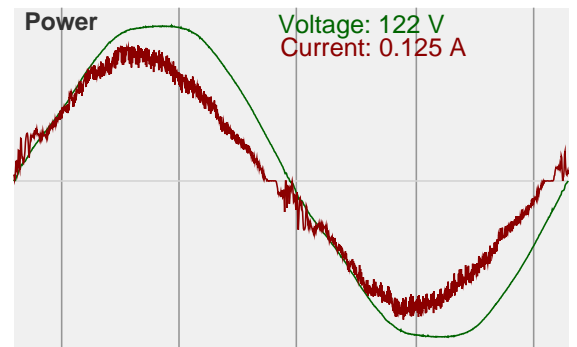
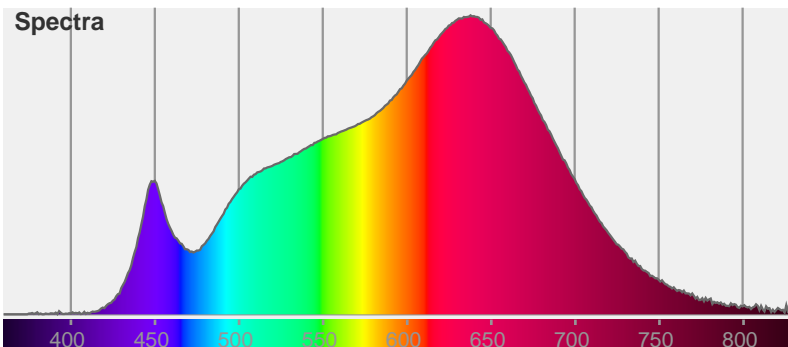


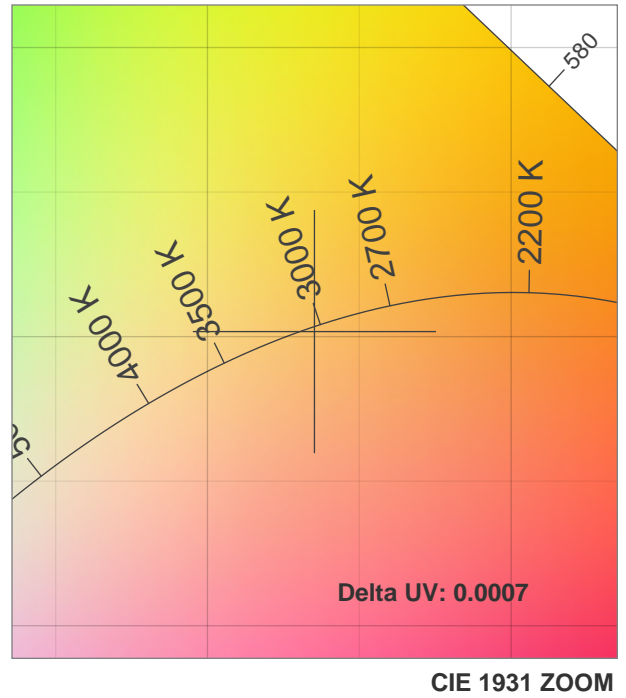
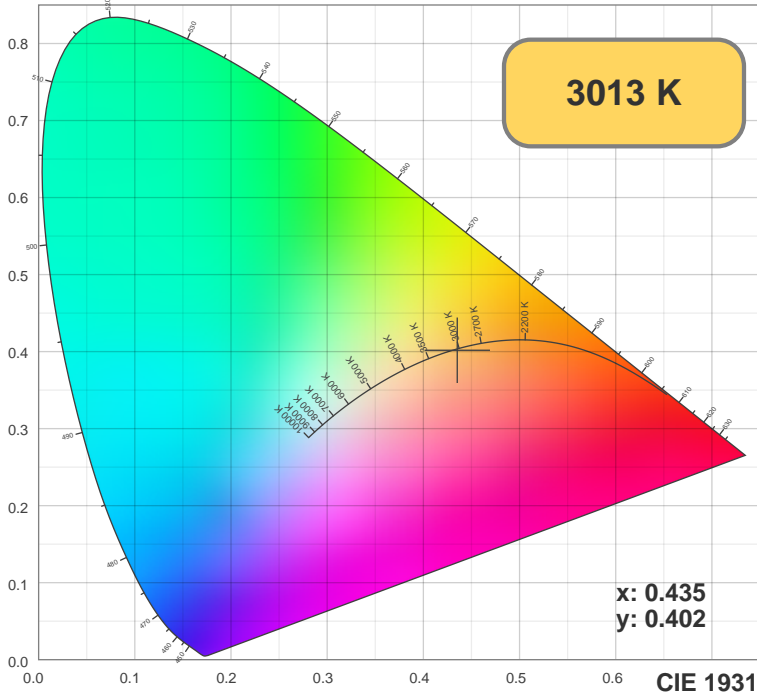
Color



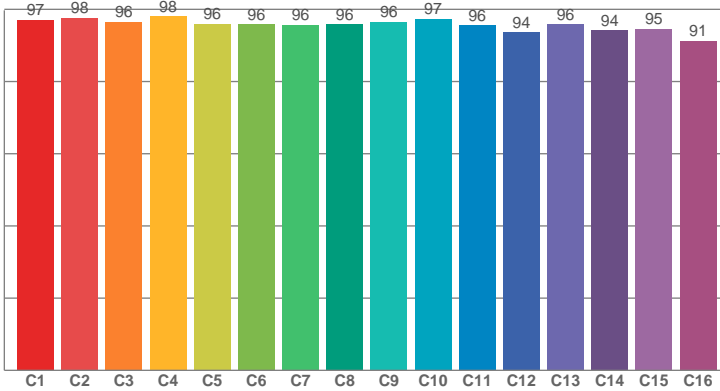
CIE1931
x: 0.435
y: 0.402

Spectra

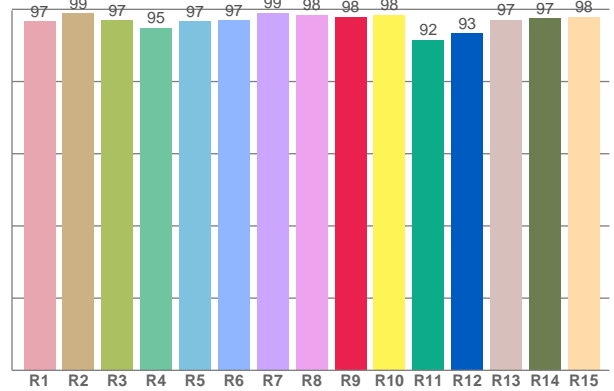




TM30: 96.0



CRI: 97.3 (R1-R8)



CRI R values, only R1-R8 are used to calculate final CRI value

R1	R2	R3	R4	R5	R6	R7	R8	R9	R10	R11	R12	R13	R14	R15
96.70	98.95	96.92	94.88	96.71	97.00	99.03	98.48	97.91	98.49	91.55	93.36	97.06	97.44	97.89

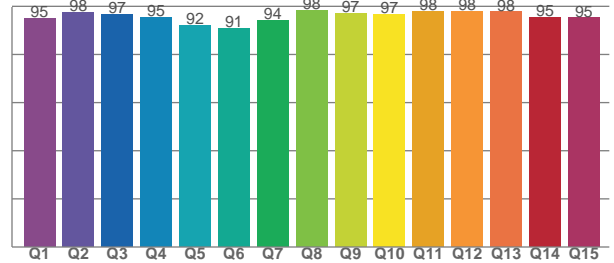
TM30 C values, 16 binned values out of total of 99 C values

C1	C2	C3	C4	C5	C6	C7	C8	C9	C10	C11	C12	C13	C14	C15	C16
97.11	97.58	96.48	98.12	95.98	95.83	95.67	95.86	96.49	97.33	95.56	93.67	95.85	94.17	94.55	91.30

CQS Q values

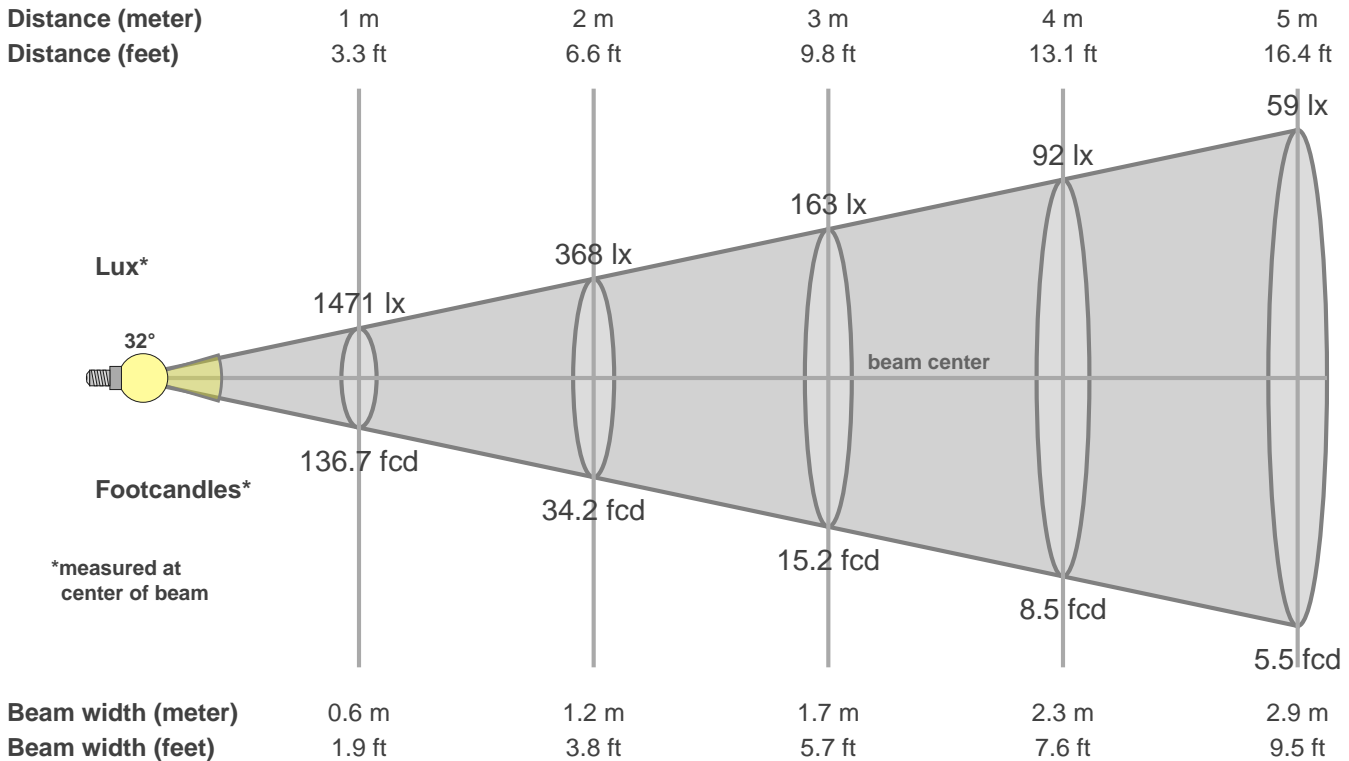
Q1	Q2	Q3	Q4	Q5	Q6	Q7	Q8	Q9	Q10	Q11	Q12	Q13	Q14	Q15
95.01	97.56	96.75	95.47	92.12	90.74	94.31	98.34	97.05	96.74	97.89	97.97	97.71	95.37	95.25

CQS: 95.1



Color parameters

CCT	CRI	CRI R9	TM30 Rf	TM30 Rg	CQS	x	y	u	v	Duv
3013 K	97.3	97.9	96.0	102.5	95.1	0.4	0.4	0.3	0.3	0.0007



Intensities in 0° c-plane

0°	2°	4°	6°	8°	10°	12°	14°	16°	18°	20°	22°	24°	26°	28°	30°	32°	34°	36°	38°
1471	1455	1409	1336	1242	1133	1013	891	759	615	477	360	266	196	146	111	87	71	59	52
100%	99%	96%	91%	84%	77%	69%	61%	52%	42%	32%	24%	18%	13%	10%	8%	6%	5%	4%	4%

Intensities in 90° c-plane

0°	2°	4°	6°	8°	10°	12°	14°	16°	18°	20°	22°	24°	26°	28°	30°	32°	34°	36°	38°
1471	1461	1426	1368	1287	1180	1052	904	747	596	463	352	266	203	157	125	102	86	75	67
100%	99%	97%	93%	87%	80%	72%	61%	51%	41%	31%	24%	18%	14%	11%	9%	7%	6%	5%	5%

Intensities in 180° c-plane

0°	2°	4°	6°	8°	10°	12°	14°	16°	18°	20°	22°	24°	26°	28°	30°	32°	34°	36°	38°
1471	1455	1408	1334	1238	1127	1009	887	758	609	473	356	263	194	144	110	86	70	59	52
100%	99%	96%	91%	84%	77%	69%	60%	52%	41%	32%	24%	18%	13%	10%	7%	6%	5%	4%	4%

Intensities in 270° c-plane

0°	2°	4°	6°	8°	10°	12°	14°	16°	18°	20°	22°	24°	26°	28°	30°	32°	34°	36°	38°
1471	1461	1428	1367	1285	1180	1053	906	747	595	460	349	262	199	154	122	100	84	73	65
100%	99%	97%	93%	87%	80%	72%	62%	51%	40%	31%	24%	18%	14%	10%	8%	7%	6%	5%	4%

Beam angle 50%	Field angle 10%	Cutoff angle 2.5%	Intensity ratio in 120° cone	Intensity ratio in 90° cone
32.5°	56.4°	105.7°	93.1%	85.3%