



LUMINAIRE TESTING LABORATORY, INC.

SUSTAINING MEMBER of the IESNA

905 Harrison Street · Allentown, PA 18103 · 610-770-1044 · Fax 610-770-8912 · www.LuminaireTesting.com

LTL NUMBER: 09789

DATE: 04-18-2006

PREPARED FOR: SPECIALTY LIGHTING INDUSTRIES, LLC

CATALOG NUMBER: 1100-CFL18

LUMINAIRE: FORMED STEEL AND EXTRUDED ALUMINUM HOUSING, FORMED SEMI-SPECULAR ALUMINUM REFLECTOR, CLEAR LINEAR PRISMATIC ACRYLIC LENS.

LAMP: ONE HORIZONTAL 18 WATT DOUBLE TUBE COMPACT FLUORESCENT LAMP RATED AT 1200 LUMENS.

LAMP CATALOG NUMBER: SYLVANIA CF18DD/E/830

BALLAST: ONE ADVANCE ICN-2S18-H1-LD

MOUNTING: RECESSED

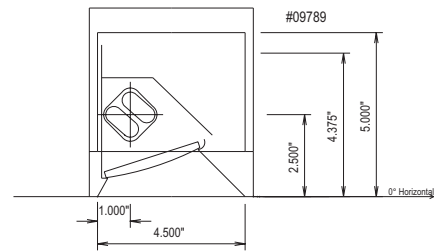
TOTAL INPUT WATTS = 17.2 AT 120.0 VOLTS

THE 0 DEGREE PLANE IS PERPENDICULAR TO THE LAMPS.

CANDELA DISTRIBUTION

	0.0	22.5	45.0	67.5	90.0	112.5	135.0	157.5
0	213	213	213	213	213	213	213	213
5	248	247	242	229	210	193	184	180
15	257	265	265	251	209	179	179	177
25	206	211	243	241	191	154	151	121
35	203	215	195	206	154	109	83	61
45	161	164	159	150	102	61	46	36
55	113	126	97	101	57	35	27	23
65	54	59	55	43	31	21	16	9
75	23	25	23	20	16	10	7	5
85	2	3	4	5	5	3	1	1
90	0	0	0	0	0	0	0	0

	180.0	202.5	225.0	247.5	270.0	292.5	315.0	337.5
0	213	213	213	213	213	213	213	213
5	181	180	184	192	207	224	236	243
15	175	174	172	168	201	234	251	256
25	108	120	144	143	177	219	221	203
35	52	59	79	103	139	181	175	198
45	32	34	42	59	94	125	137	149
55	20	21	25	34	56	82	88	108
65	7	8	14	20	30	38	45	51
75	4	4	6	10	15	18	19	21
85	0	1	1	2	3	3	2	1
90	0	0	0	0	0	0	0	0



ZONAL LUMEN SUMMARY

ZONE	LUMENS	%LAMP	%FIXT
0- 30	163	13.5	37.7
0- 40	249	20.7	57.7
0- 60	381	31.8	88.5
0- 90	431	35.9	100.0
90-180	0	0.0	0.0
0-180	431	35.9	100.0

LUMEN TABULATION

0- 10	20
10- 20	60
20- 30	82
30- 40	86
40- 50	76
50- 60	57
60- 70	32
70- 80	15

TOTAL LUMINAIRE EFFICIENCY: 35.9%

CIE TYPE: DIRECT

PLANE: 0-DEG 90-DEG 180-DEG 270-DEG

SPACING CRITERIA: 1.4 1.2 0.8 1.1

LUMINOUS LENGTH: 4.500 6.125

TESTED BY HERSCHEL SCHRECK
CHECKED BY MIKE GRATHER

THIS REPORT BASED ON LM-46 AND OTHER PERTINENT IESNA PROCEDURES.



LUMINAIRE TESTING LABORATORY, INC.

SUSTAINING
MEMBER
of the
IESNA

905 Harrison Street · Allentown, PA 18103 · 610-770-1044 · Fax 610-770-8912 · www.LuminaireTesting.com

LTL NUMBER: 09789

DATE: 04-18-2006

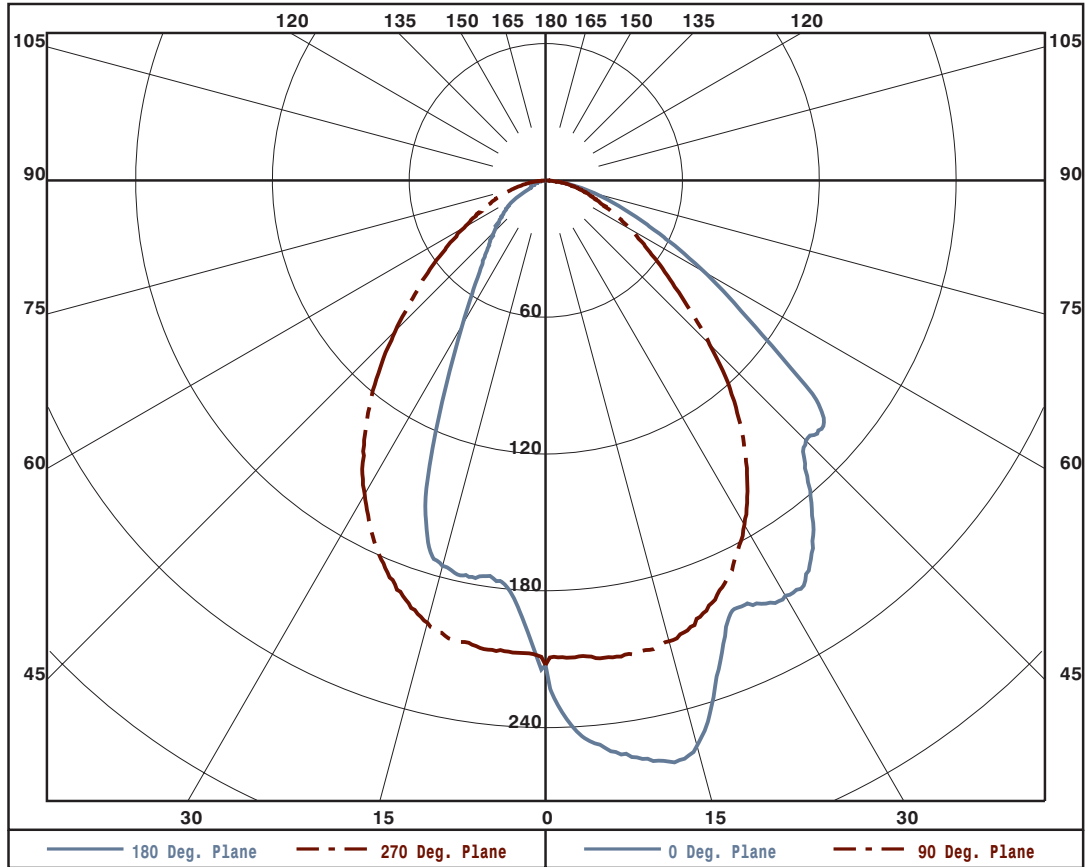
PREPARED FOR: SPECIALTY LIGHTING INDUSTRIES, LLC

ZONAL LUMEN SUMMARY

0- 5	5.
5- 10	15.
10- 15	25.
15- 20	35.
20- 25	40.
25- 30	42.
30- 35	44.
35- 40	43.
40- 45	40.
45- 50	36.
50- 55	32.
55- 60	25.
60- 65	19.
65- 70	13.
70- 75	9.
75- 80	6.
80- 85	3.
85- 90	0.

LUMINANCE IN CANDELA PER SQUARE METER

ANGLE IN DEG	AVERAGE 0-DEG	AVERAGE 45-DEG	AVERAGE 90-DEG
0	11977.	11977.	11977.
45	12803.	12644.	8111.
55	11078.	9510.	5588.
65	7185.	7318.	4125.
75	4997.	4997.	3476.
85	1290.	2581.	3226.





LUMINAIRE TESTING LABORATORY, INC.

SUSTAINING MEMBER of the IESNA

905 Harrison Street · Allentown, PA 18103 · 610-770-1044 · Fax 610-770-8912 · www.LuminaireTesting.com

LTL NUMBER: 09789

DATE: 04-18-2006

PREPARED FOR: SPECIALTY LIGHTING INDUSTRIES, LLC

CANDELA DISTRIBUTION

Table with 9 columns representing candela values (0.0 to 157.5) and 17 rows representing beam angles (0 to 90 degrees).

Table with 9 columns representing candela values (180.0 to 337.5) and 17 rows representing beam angles (0 to 90 degrees).



LUMINAIRE TESTING LABORATORY, INC.

SUSTAINING
MEMBER
of the
IESNA

905 Harrison Street · Allentown, PA 18103 · 610-770-1044 · Fax 610-770-8912 · www.LuminaireTesting.com

LTL NUMBER: 09789

DATE: 04-18-2006

PREPARED FOR: SPECIALTY LIGHTING INDUSTRIES, LLC

COEFFICIENTS OF UTILIZATION - ZONAL CAVITY METHOD

EFFECTIVE FLOOR CAVITY REFLECTANCE 0.20

RC	80				70				50			30			10			0
	70	50	30	10	70	50	30	10	50	30	10	50	30	10	50	30	10	0
0	43	43	43	43	42	42	42	42	40	40	40	38	38	38	37	37	37	36
1	40	39	37	36	39	38	37	36	36	35	35	35	34	34	34	33	33	32
2	37	35	33	31	36	34	32	31	33	31	30	32	30	29	31	30	29	28
3	34	31	29	27	34	31	29	27	30	28	26	29	27	26	28	27	25	25
4	32	28	26	24	31	28	25	23	27	25	23	26	24	23	25	24	23	22
5	29	25	23	21	29	25	22	20	24	22	20	24	22	20	23	21	20	19
6	27	23	20	18	27	23	20	18	22	20	18	22	19	18	21	19	18	17
7	25	21	18	16	25	21	18	16	20	18	16	20	18	16	19	17	16	15
8	23	19	16	14	23	19	16	14	18	16	14	18	16	14	17	15	14	13
9	22	17	14	13	21	17	14	12	17	14	12	16	14	12	16	14	12	12
10	20	16	13	11	20	16	13	11	15	13	11	15	13	11	15	12	11	10

NOTE: THE ZONAL CAVITY CALCULATION TECHNIQUE IS ACCURATE WHEN LUMINAIRES WITH SYMMETRIC CANDELA DISTRIBUTIONS ARE EMPLOYED AND WHEN THE LUMINAIRES ARE LOCATED SYMMETRICALLY THROUGHOUT THE ROOM. THIS UNIT HAS SPECIAL CHARACTERISTICS AND THEREFORE THESE COEFFICIENTS SHOULD BE USED WITH CAUTION.

THIS TEST WAS CONDUCTED USING RELATIVE PHOTOMETRY TECHNIQUES ACCORDING TO STANDARD IESNA PROCEDURES. THE USER MUST THEREFORE USE CAUTION IN THE FOLLOWING SITUATIONS: 1) ACCORDING TO IESNA PROCEDURES, THE BALLAST(S) AND LAMP(S) ARE PRESUMED TO PRODUCE 100% OF RATED OUTPUT. AN APPROPRIATE BALLAST FACTOR MUST BE APPLIED TO THE LUMEN OUTPUT RATINGS AND LUMINOUS INTENSITY VALUES GIVEN. 2) THIS TEST WAS CONDUCTED IN A CONTROLLED LABORATORY ENVIRONMENT, FIELD PERFORMANCE MAY DIFFER.