

UNIVERSAL HOUSING MILLWORK CEILING INSTALLATION

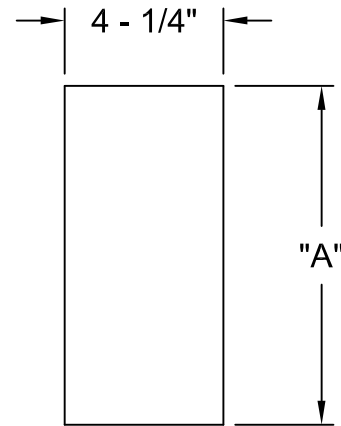
MOUNTING INSTRUCTIONS

It is recommended that these products are installed by a qualified electrician.

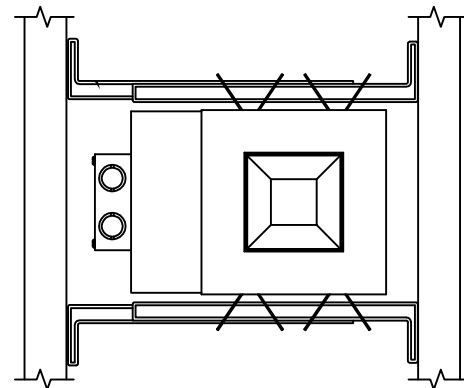
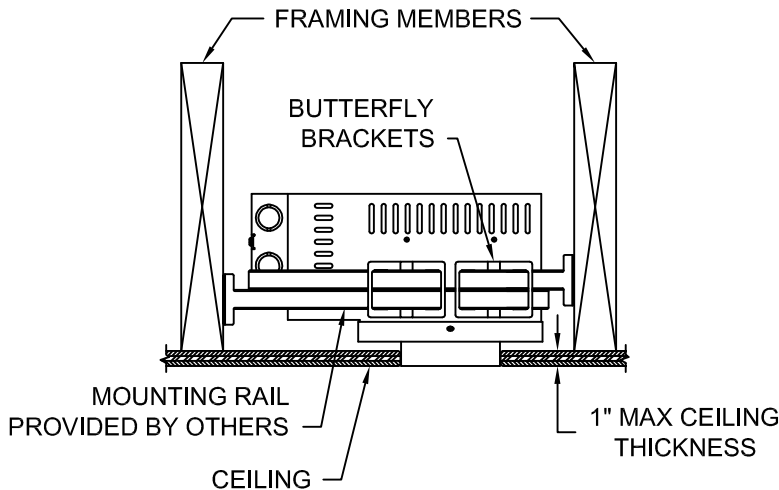
1. Insert mounting bars through butterfly brackets. Mounting bars are not included with fixture. The installer may use universal mounting rails purchased separately from distributor or black iron C channel.
2. Adjust butterfly brackets so that the bottom of the housing is co-planar with the bottom of the finished ceiling.
3. Connect power to fixture.
4. Cut a rectangular aperture in the ceiling as shown in the diagram
5. Install the ceiling below the fixture.
6. Adjust the butterfly brackets with the internal wing nuts to level the fixture with the bottom of the ceiling if required. (Approx. 3/8" vertical adjustment.)
7. Install trim. Test with power.

DIMENSIONS FOR CEILING CUTOUT

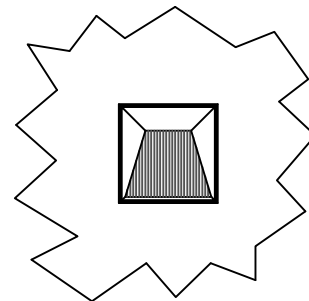
FIXTURE	WIDTH	A
1 Light	4 - 1/4"	4 - 1/4"
2 Light	4 - 1/4"	9 - 1/8"
3 Light	4 - 1/4"	13 - 15/16"



CEILING CUTOUT



REFLECTED PLAN VIEW
1009/4009 TRIM



REFLECTED PLAN VIEW
1240 TRIM



SPECIALTY LIGHTING
INDUSTRIES, INC.

1306 DORIS AVENUE, OCEAN, NJ 07712 USA

800.462.7812

www.specialtylightingindustries.com
732.517.0800 FAX 732.517.0971