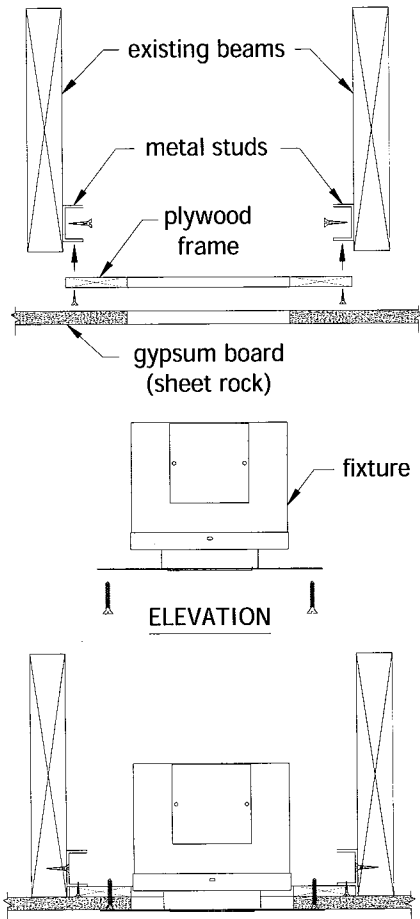


# PLASTER CEILING INSTALLATION

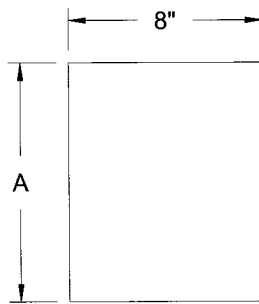
## METHOD ONE

1. Fasten metal studs to existing beams.
2. Fasten plywood frame to metal studs
3. Install gypsum ceiling.
4. Connect fixture to power.
5. Insert fixture through opening in ceiling and fasten through gypsum to plywood frame.



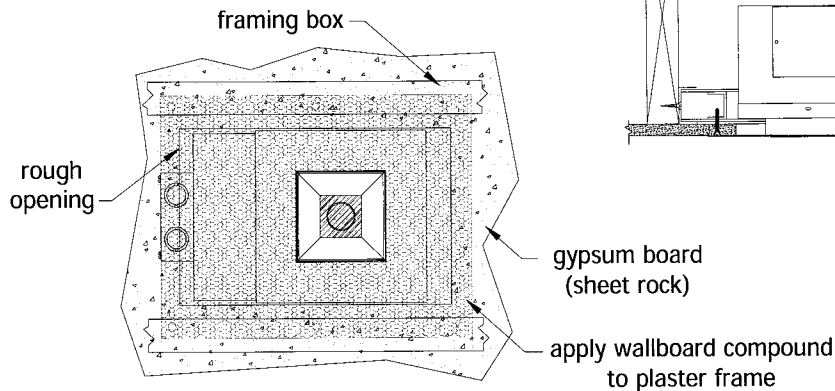
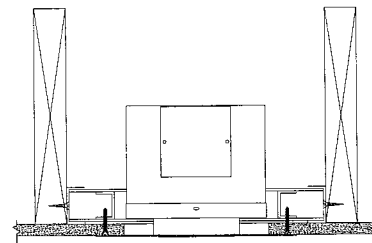
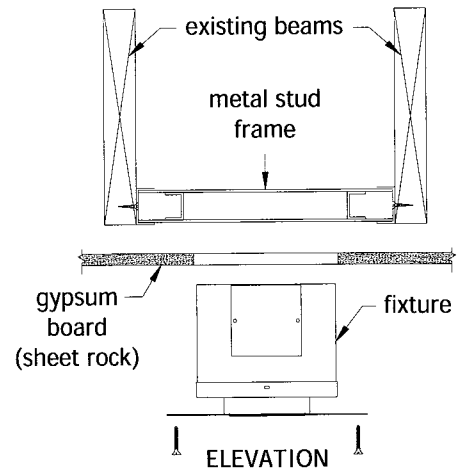
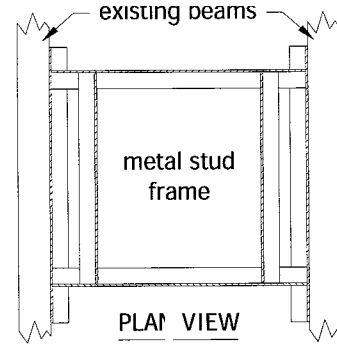
### DIMENSIONS FOR ROUGH OPENING

FIXTURE	A
1 Light	12.5"
2 Light	16.5"
3 Light	22"



## METHOD TWO

1. Fasten metal studs to existing beams.
2. Fasten plywood frame to metal studs
3. Install gypsum ceiling.
4. Connect fixture to power.
5. Insert fixture through opening in ceiling and fasten through gypsum to metal studs.



REFLECTED  
PLAN VIEW



**SPECIALTY LIGHTING  
INDUSTRIES, INC.** ©2004

1306 DORIS AVENUE OCEAN, NJ 07712 800.462.7812 732.517.0800 FAX 732.517.0971 [www.specialtylightingindustries.com](http://www.specialtylightingindustries.com)

\*Please confirm with approval drawings for proper cut out dimensions; as specifications might vary.

These specifications subject to change without notice.