

Multi-lamp, solid state light engine, recessed linear wall grazer with flangless housing, nominal 2" (51mm) wide aperture parabolic baffle and aperture lens. Narrow profile wall grazing downlight used in wall heights up to 12 feet (3.5m) to highlight the texture in surfaces such as stucco or brick, illuminate flat surfaces such as venetian plaster, wood, or specular surfaces such as polished stone or stainless steel.

SPECIFICATIONS

HOUSING

- Extruded aluminum housing with integral plaster frame

MOUNTING

- Recessed in sheetrock or plaster ceiling

ELECTRICAL

- Integral dimmable electronic driver with internal short circuit protection.

LAMP

- 2 watt LED supplied with fixture

SOCKET

- Circuit board mounted to extruded aluminum heatsink
- Inline connectors allow removal and replacement

LENS

- Acrylic diffusing lens. Others available consult factory

TRIM

- Parabolic louver baffle

FINISH

- Housing available in white as standard
- Louver available in black or white as standard
- Additional standard colors, RAL palette, custom finishes available

LABELS

-  US, US tested to UL standards 1598, Damp location

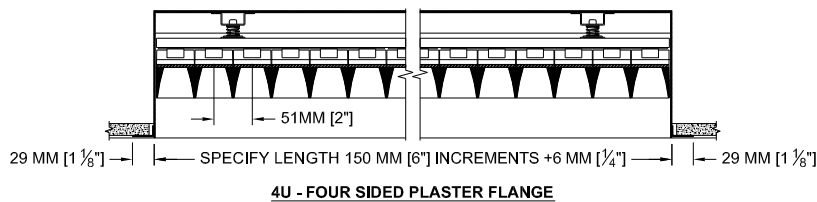
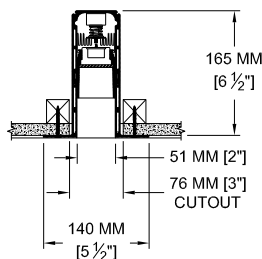
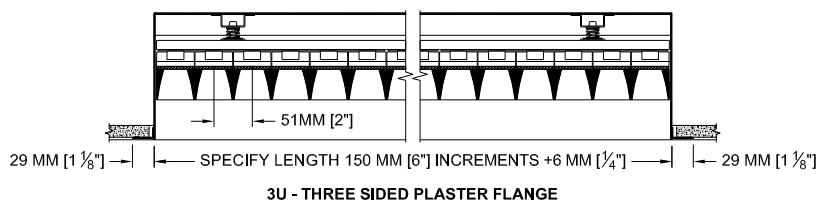
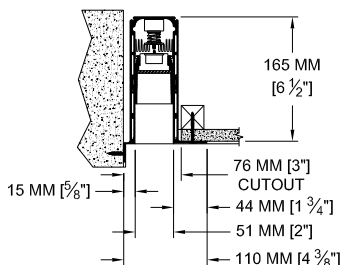
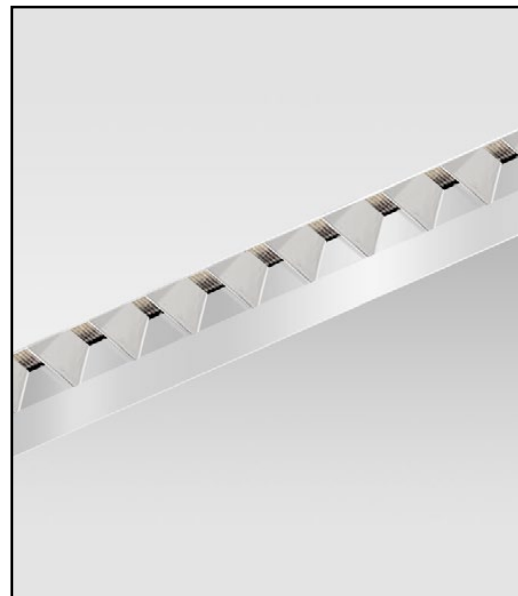
JOB: _____

SPECIFIER: _____

TYPE: _____

QUANTITY: _____

SIGNATURE: _____



REFLECTED PLAN VIEW

ORDERING INFORMATION

812-LED-PH	LENGTH	SOURCE / DRIVER	HOUSING / LOUVER	APERTURE LENS	ACCESSORIES
Plaster Housing 8 = 80 CRI 27 = 2700K 30 = 3000K 35 = 3500K	Specify exact length in increments of 6" (150 mm) Min. 2' required for integral driver	UN3 =120v-277v, 0-10v Dim. 9W/ft 600lm/ft (nom.) UN5 =120v-277v, 0-10v Dim. 12W/ft 700lm/ft (nom.) *Add L2 , LTB for Lutron 2 wire, Lutron Fade-to-Black L2 = 120v, Lutron Hi-lume 1% 2-wr LED driver 9W/ft 1100lm/ft (nom.) LTB =120-277v, Fade-to-Black Lutron Hi-lume 1% digital EcoSystem driver 12W/ft 700lm/ft (nom.)	WHT = White BLK =Black PXX = SLI Color CST = Custom	79A = Veiling Acrylic 81A = Frosted Solite 82A = Frosted Supertex 91A = Solite 92A = Supertex	3U = 3 Side Ultrim 4U = 4 Side Ultrim



Patent Pending.
These specifications subject to change without notice.

www.specialtylightingindustries.com
1306 Doris Avenue, Ocean, NJ 07712 USA
800.462.7812 732.517.0800 FAX:732.517.0971