

Multi-lamp, solid state light engine, recessed linear wall grazer with flangless housing, nominal 2" (51mm) wide aperture parabolic baffle and aperture lens. Narrow profile wall grazing downlight used in wall heights up to 12 feet (3.5m) to highlight the texture in surfaces such as stucco or brick, illuminate flat surfaces such as venetian plaster, wood, or specular surfaces such as polished stone or stainless steel.

SPECIFICATIONS

HOUSING

- Extruded aluminum housing with integral plaster frame

MOUNTING

- Recessed in sheetrock or plaster ceiling

ELECTRICAL

- Integral dimmable electronic driver with internal short circuit protection.

LAMP

- 2 watt LED 2" (50mm) o.c. supplied with fixture

SOCKET

- Circuit board mounted to extruded aluminum heatsink
- Inline connectors allow removal and replacement

LENS

- Acrylic diffusing lens. Others available consult factory


TRIM

- Parabolic louver baffle
- ST is flanged trim fully sealed and gasketed. Aperture lens required

FINISH

- Housing available in white as standard
- Louver available in black or white as standard
- Additional standard colors, RAL palette, custom finishes available

LABELS

-  US, US tested to UL standards 1598, Damp location, Wet with ST trim

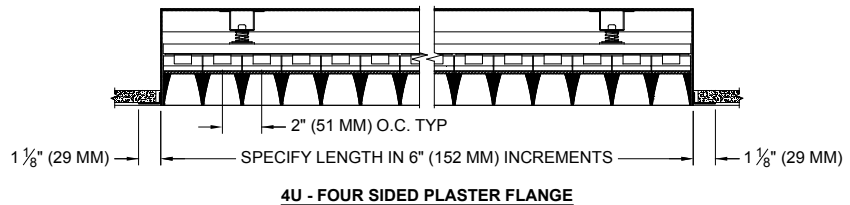
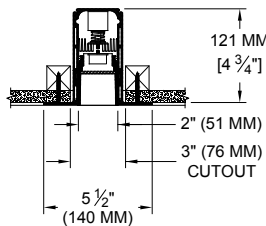
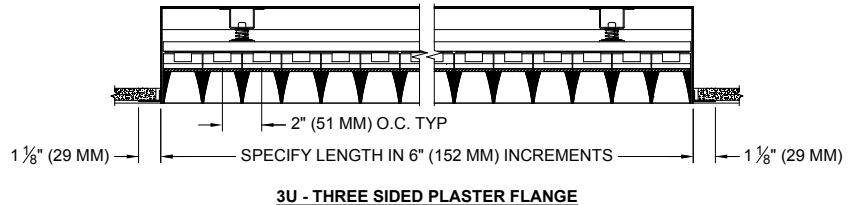
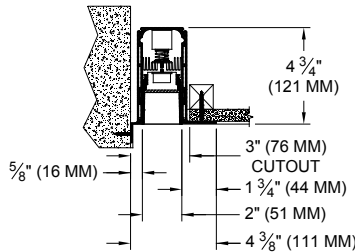
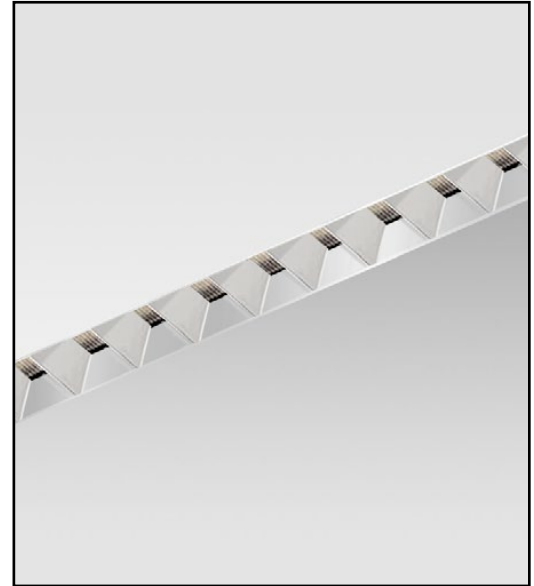
JOB: _____

SPECIFIER: _____

TYPE: _____

QUANTITY: _____

SIGNATURE: _____



ORDERING INFORMATION

| 811DB-LED-PH | LENGTH | SOURCE / DRIVER | HOUSING / LOUVER | APERTURE LENS | ACCESSORIES |
|---|---|--|---|---|---|
| Plaster Housing 8 = 80 CRI 27 = 2700K 30 = 3000K 35 = 3500K | Specify exact length in increments of 6" (150 mm) Minimum 2' for integral driver | UN3 = 120v-277v, 0-10v Dim. 9W/ft 600lm/ft (nom.) UN5 = 120v-277v, 0-10v Dim. 12W/ft 700lm/ft (nom.) *Add L2 , LTB for Lutron 2 wire, Lutron Fade-to-Black L2 = 120v, Lutron Hi-lume 1% 2-wr LED driver 9W/ft 1100lm/ft (nom.) LTB = 120-277v, Fade-to-Black Lutron Hi-lume 1% digital EcoSystem driver 12W/ft 700lm/ft (nom.) | WHT = White BLK = Black PA = Clear Aluminum PXX = SLI Color CST = Custom | 79A = Veiling Acrylic 82A = Frosted Supertex | ST = Shower Trim* 3U = 3 Side Ultrim 4U = 4 Side Ultrim *Aperture lens required |



Patent Pending.
These specifications subject to change without notice.

www.specialtylightingindustries.com
1306 Doris Avenue, Ocean, NJ 07712 USA
800.462.7812 732.517.0800 FAX: 732.517.0971