

Multi-lamp, solid state light engine, recessed linear wall grazer with flangless housing, nominal 4" (100mm) wide aperture, parabolic baffle and regressed acrylic lens. Medium aperture wall grazer used in ceiling heights up to 40' (12M) to highlight the texture in surfaces such as stucco or brick, illuminate flat surfaces such as venetian plaster, fabric or wood, or specular surfaces such as polished stone or stainless steel.

JOB: _____
SPECIFIER: _____
TYPE: _____
QUANTITY: _____
SIGNATURE: _____

SPECIFICATIONS

HOUSING

- Precision die-formed heavy gauge aluminum

MOUNTING

- Recessed in sheetrock ceiling

ELECTRICAL

- Integral LED driver
- 120-277v current at 50hz or 60hz
- Compatible with 0-10V dimming, phase dimming of Lutron

LAMP

- AmbientDim™ LED supplied with fixture

SOCKET

- **Usocket™** allows easy field replacement of light engine

LENS

- Veiling acrylic lens or frosted Supertex


TRIM

- Extruded aluminum side rails with extruded aluminum parabolic baffles

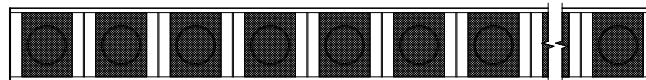
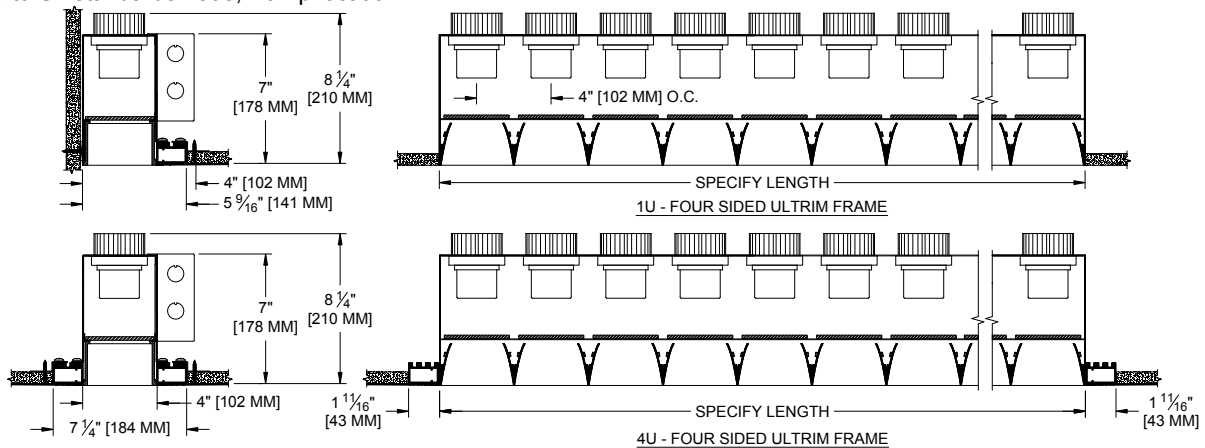
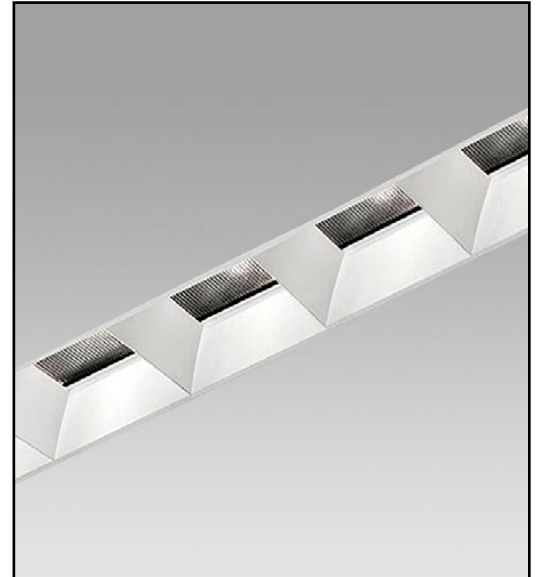
FINISH

- Aperture trim available in black and white as standard
- Additional standard colors, RAL palette, custom finishes available

LABELS

-  US, US tested to UL standards 1598, Damp location

AmbientDim™



REFLECTED PLAN VIEW

ORDERING INFORMATION

811-LED-AD-PH	LENGTH	LAMP SPACING	SOURCE / DRIVER*	HOUSING / LOUVER	APERTURE LENS	ACCESSORIES
			AD14 /	/		
Plaster Housing Ambient Dimming LED *CCT Max 3000K-1900K	Specify exact length* *Minimum Lamp Spacing 4" O.C.	4 = 4" 6 = 6" or custom spacing	AD14=350ma, 14.5W, 1000lm S1 =0-10V dimming, 1%, 120-277v T1 =TRIAC/ELV 2-wire, 3% 120v (Lead/Trail Edge) E1 =EldoLED 0-10V Logarithmic Dim, 0.1%, 120-277v E2 =EldoLED DALI, 0.1%, 120-277v E3 =EldoLED 0-10V Linear Dim, 0.1%, 120-277v L2 =Ltm Hi-lume 1% 2-wr LED driver (120v fwd phase) L3 =Lutron Hi-lume 1% 3-wire/EcoSystem, 120-277v LTB =Lutron Hi-lume 1% EcoSys LED driver, 1%, 120-277v, Soft-on, Fade-to-Black	P14 = White BLK=Black PA = Clear Aluminum PXX = SLI Color CST = Custom	79A = Veiling Acrylic 82A = Frosted Supertex	1U = 1 Side Ultrim 4U = 4 Side Ultrim

*Remote mount may be required

Patent Pending.
These specifications subject to change without notice.

www.specialtylightingindustries.com

1306 Doris Avenue, Ocean, NJ 07712 USA

800.462.7812 732.517.0800 FAX:732.517.0971

02/18

