

Multi-lamp, solid state light engine, recessed linear wall washer. Nominal 5" (125mm) wide aperture, flangeless trim and acrylic lens. Small aperture slot used in ceiling heights up to 12 feet (4m) to smoothly wash vertical surfaces such as walls, marker boards, information panels, etc. Suitable for new construction.

## SPECIFICATIONS

### HOUSING

- Extruded aluminum housing with utrim plaster frame

### MOUNTING

- Recessed in sheetrock ceiling

### ELECTRICAL

- Integral electronic 0-10v or phase control dimmable driver
- Integral wireway for connection to supply wires

### LAMP

- 8 watt LED 1100lm/ft supplied with fixture
- Available with 80 CRI and 2700K thru 3000K / 90+ CRI consult factory

### SOCKET

- Semi-specular low iridescence aluminum reflector
- Inline connectors allow removal and replacement

### LENS

- AVA acrylic diffusing lens as standard. Others available consult factory.

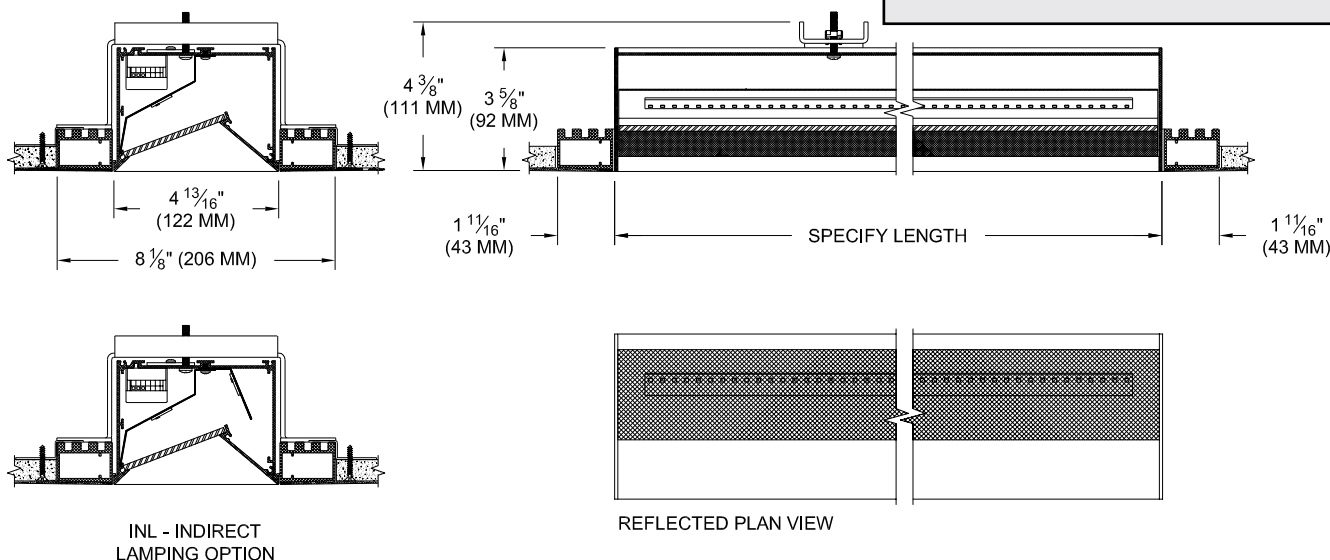
### FINISH

- Powder paint on all surfaces in black and white as standard
- Additional colors and RAL palette available
- Custom finishes available

### LABELS

-  US, US tested to UL standards 1598, Damp location

JOB: \_\_\_\_\_  
 SPECIFIER: \_\_\_\_\_  
 TYPE: \_\_\_\_\_  
 QUANTITY: \_\_\_\_\_  
 SIGNATURE: \_\_\_\_\_



## ORDERING INFORMATION

601-LED-PH	LENGTH	DRIVER*	FINISH	APERTURE LENS	ACCESSORIES
Plaster Housing 8=80CRI 27=2700K 30=3000K 9=90+CRI Special Order consult factory	Specify length in 1' (300mm) increments, 2' (600mm) minimum.	UN2 =120v-277v, 0-10v Dim. 9W/ft 1100lm/ft 122LT2 =120v, Ltrn 2 wire 9W/ft 1100lm/ft 122LT3 =120v, Ltrn 3 wire 9W/ft 1100lm/ft	WHT = White BLK=Black PXX = SLI Color XXXX = RAL # CST = Custom	74A= AVA Optic 79A= Veiling Acrylic 82A= Frosted Supertex 91A= Solite 92A= Supertex	INL= Indirect Lamping

\*Lumen and watt output based on single LED Board per foot.

Patent Pending.  
 These specifications subject to change without notice.

[www.specialtylightingindustries.com](http://www.specialtylightingindustries.com)

1306 Doris Avenue, Ocean, NJ 07712 USA

800.462.7812 732.517.0800 FAX:732.517.0971

