

Multi-lamp, solid state light engine, recessed linear wall washer. Nominal 5"(125mm) wide aperture, flanged trim and acrylic lens. Small aperture slot used in ceiling heights up to 12 feet (4m) to smoothly wash vertical surfaces such as walls, marker boards, information panels, etc. Suitable for new construction.

SPECIFICATIONS

HOUSING

- Extruded aluminum housing with flange

MOUNTING

- Recessed in architectural ceiling

ELECTRICAL

- Integral electronic 0-10v or phase control dimmable driver
- Integral wireway for connection to supply wires

LAMP

- 8 watt LED 1100lm/ft supplied with fixture
- Available with 80 CRI and 2700K thru 3000K / 90+ CRI consult factory

SOCKET

- Semi-specular low iridescence aluminum reflector
- Inline connectors allow removal and replacement

LENS

- AVA acrylic diffusing lens as standard. Others available consult factory.

TRIM

- Overlap flange

FINISH

- Powder paint on all surfaces in white as standard
- Additional colors and RAL palette available
- Custom finishes available

LABELS

-  , US tested to UL standards 1598, Damp location

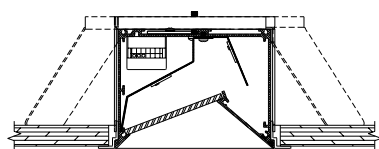
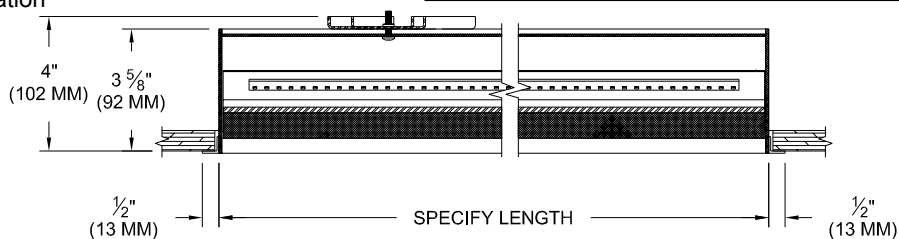
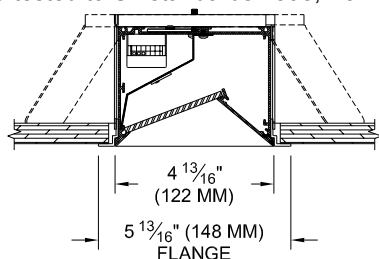
JOB: _____

SPECIFIER: _____

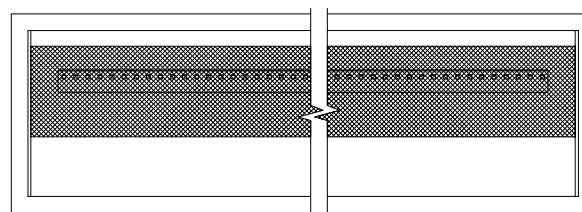
TYPE: _____

QUANTITY: _____

SIGNATURE: _____



INL - INDIRECT LAMPING OPTION



REFLECTED PLAN VIEW

ORDERING INFORMATION

601-LED-FH	LENGTH	DRIVER*	FINISH	APERTURE LENS	ACCESSORIES
Flange Housing 8=80CRI 27=2700K 30=3000K 9=90+CRI Special Order consult factory	Specify length in 1' (300mm) increments, 2' (600mm) minimum.	UN2 =120v-277v, 0-10v Dim. 9W/ft 1100lm/ft 122LT2 =120v, Ltrn 2 wire 9W/ft 1100lm/ft 122LT3 =120v, Ltrn 3 wire 9W/ft 1100lm/ft	WHT = White BLK=Black PXX = SLI Color XXXX = RAL # CST = Custom	74A= AVA Optic 79A= Veiling Acrylic 82A= Frosted Supertex 91A= Solite 92A= Supertex	INL= Indirect Lamping

*Lumen and watt output based on single LED Board per foot.

Patent Pending.

These specifications subject to change without notice.

www.specialtylightingindustries.com

1306 Doris Avenue, Ocean, NJ 07712 USA

800.462.7812 732.517.0800 FAX:732.517.0971

6/18

