

Dual lamp, metal halide, recessed combination wall washer and accent light with nominal 4"x 8" (100mm x 200mm) rectangular 2 cell aperture and flangeless trim.

TYPE: \_\_\_\_\_

JOB: \_\_\_\_\_

SPECIFIER: \_\_\_\_\_

**SPECIFICATIONS**

**HOUSING** - Precision die-formed heavy gauge aluminum with perforated flangeless trim and integrated screed edge.

**MOUNTING** - Install from below in sheetrock ceiling.

**ELECTRICAL** - Integral electronic ballast. 120v primary lead, (220v, 240v, 277v available).

**LAMP** - (2) GE MR16CMH 39w max. supplied by others.

**LABELS** - CSA-C,US, Damp location

**SOCKET** - Precision die-formed aluminum socket plate and one adjustable aluminum yoke and CNC machined lampholder assembly. GX10 ceramic sockets with high temperature lead wires.

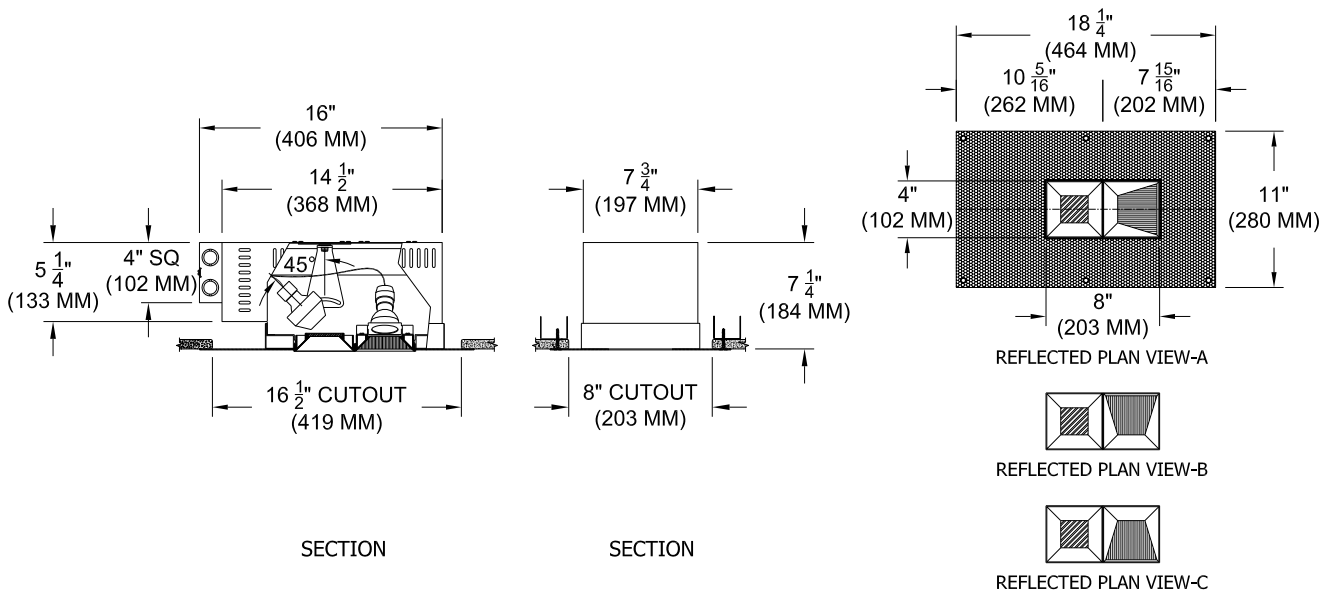
**LENS** - Supertex borosilicate spread lens, hinged for relamping. Optional lens on accent light cell.

**TRIM** - Flangeless, two piece die-cast aluminum pyramidal shield.

**FINISH** - Black powder paint housing. Aperture trim available in black and white as standard. Solid wood, additional colors and RAL palette available. Consult factory for custom finishes.

**APPLICATIONS**

Wallwashing in medium to tall ceiling heights typically found in commercial and retail applications. Suitable for new or existing construction.



**ORDERING INFORMATION**

HOUSING	TRIM	BALLAST	LENS HOLDER	LAMP LENS	TRIM FINISH	APERTURE LENS
1240AW-2MR16MH-PH	ZT	/				
Plaster Flange Housing AWA = Side WW AWB = Right WW AWC = Left WW	ZT = Zero Trim	20 = 20 Watt 120 39 = 39 Watt 220 240 277	CL= Conical FL = Flat IL = Indexed	90L = Clear 91L = Solite 92L = Supertex 95L = Full Prismatic 96L = Black Hexcell	WHT = White BLK = Black PXX = SLI Color XXXX = RAL # CST = Custom	Blank = None 91A = Solite 92A = Supertex 93A = Sandblasted 95A = Full Prismatic



**SPECIALTY LIGHTING INDUSTRIES, INC.**

NOTE: These specifications subject to change without notice.

[www.specialtylightingindustries.com](http://www.specialtylightingindustries.com)

1306 DORIS AVENUE, OCEAN, NJ 07712 USA 800.462.7812 732.517.0800 FAX 732.517.0971 ©02/13