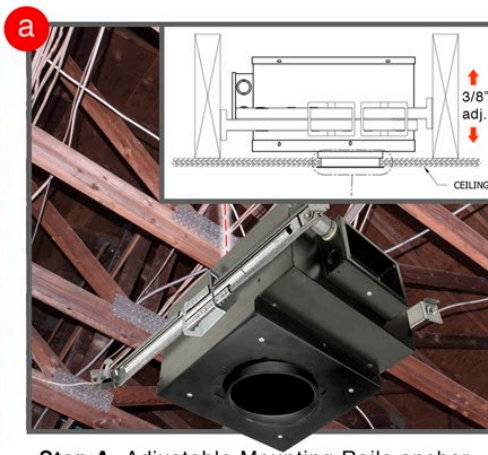
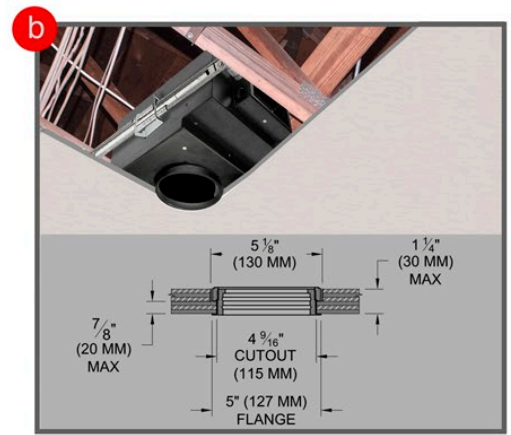




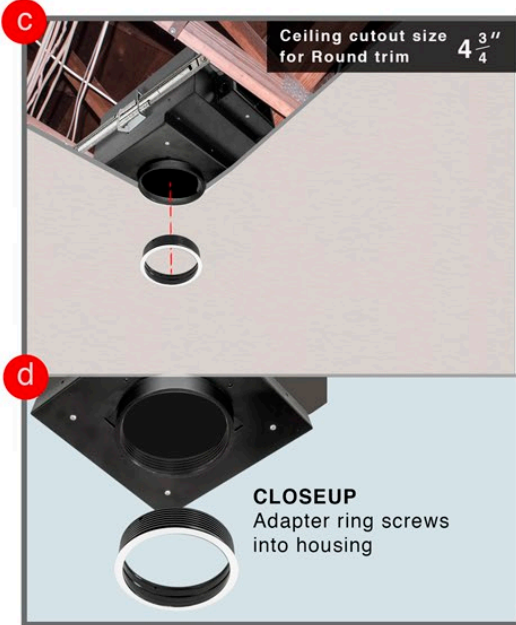
Exposed Ceiling Joists. Connect all wiring for housing before GWB installation



Step A- Adjustable Mounting Rails anchor housing to ceiling joists with screws. Housing can be adjusted vertically. See Details above.



Step B- After housing is secured, finish ceiling installation.



Step C/D- Flanged collar gets screwed into housing. This is required for proper installation of round trim.



Step E- Flanged collar should be installed after painting, wood, metal ceiling has been prepped. Screw flanged collar into housing.
Step F- Hook lamp assembly bi-pin into lamp socket.



Step G- Slide Lamp assembly into collar.

IMPORTANT
Ball Plunger on round trim needs to click into grooves in receiver

1250 uses Ball Plunger locking system

*Trim in view is 1250WW - Round Flange Trim

IMPORTANT!
Ensure that trim is aimed at wall properly

→ → → →
Illuminated Wall

trims available

1250- Round Flange

**MR-16 Wall Wash
NIC/IC Rated Flanged Round
Trim with Housing
Instruction Sheet for
1250WW**



Final step is to make sure trim is locked using ball plungers