

TYPE: \_\_\_\_\_

JOB: \_\_\_\_\_

**SPECIFICATIONS**

**HOUSING** - Heavy gauge extruded aluminum (material of corrosion resistant alloy.) Aluminum end plate.

**SOCKET** - PAR, medium base, porcelain, 500w, 250v.

**MOUNTING** - Surface mounted, provide proper support.

**LABELS** - UL, C-UL - Dry Location.

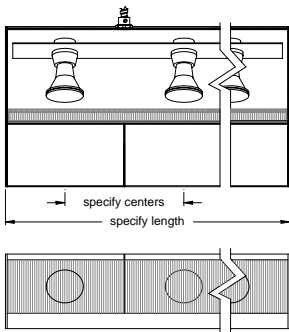
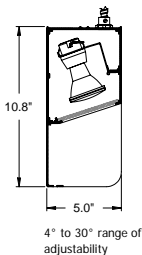
**LAMP** - PAR 20, 120v (spot recommended) - by others.

**LENS** - Supertex borosilicate glass. Others available consult factory.

**FINISH** - Powder paint on all surfaces. RAL colors standard, consult factory for custom finishes.

**APPLICATIONS**

Large profile, surface mounted, intended to smoothly wash vertical surfaces while minimizing surface texture. Adjustable angle socket plate. Ideal for general perimeter lighting, library stacks, merchandise, collections of objects and collections of art.



**ORDERING INFORMATION**

FIXTURE	LAMP SPACING	LENGTH	FINISH
<b>#806PAR20-BFL</b>			
Surface mounted linear wall wash system	<b>6 = 6"</b> <b>8 = 8"</b> <b>12 = 12"</b>	specify exact length	<b>WHT</b> = White <b>BLK</b> = Black <b>XXXX</b> = RAL # <b>CST</b> = Custom (must supply chip)



**SPECIALTY LIGHTING**  
INDUSTRIES, INC.

www.specialtylightingindustries.com

1306 DORIS AVENUE, OCEAN, NJ 07712 USA

800.462.7812

732.517.0800

FAX 732.517.0971