

TYPE: _____

JOB: _____

SPECIFICATIONS

HOUSING - Heavy gauge extruded aluminum (material of corrosion resistant alloy.) Welded aluminum end plate, no visible seam.

ELECTRICAL - PAR20, 120v

SOCKET - PAR, medium base, porcelain, 500w, 250v.

MOUNTING - Surface mounted, provide proper support.

LABELS - UL, C-UL - Dry Location.

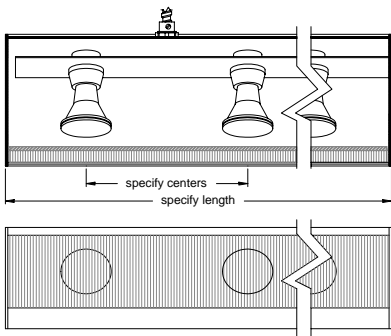
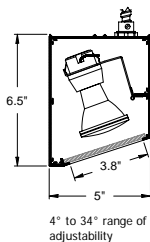
LAMP - PAR 20, 120v (spot recommended) - by others.

LENS - Supertex borosilicate glass. Others available consult factory.

FINISH - Powder paint on all surfaces. RAL colors standard, consult factory for custom finishes.

APPLICATIONS

Large profile, surface mounted, intended to smoothly wash vertical surfaces while minimizing surface texture. Adjustable angle socket plate. Ideal for general perimeter lighting, library stacks, merchandise, collections of objects and collections of art.



ORDERING INFORMATION

| FIXTURE | LAMP SPACING | LENGTH | FINISH |
|---|------------------------------|----------------------|--|
| #806PAR20 | | | |
| Surface mounted linear wall wash system | 6 = 6" 8 = 8" 10 = 10" | specify exact length | WHT = White BLK = Black XXXX = RAL # CST = Custom (must supply chip) |



SPECIALTY LIGHTING
INDUSTRIES, INC.

www.specialtylightingindustries.com

1306 DORIS AVENUE, OCEAN, NJ 07712 USA

800.462.7812

732.517.0800

FAX 732.517.0971