

Multilamp halogen low voltage surface mounted linear wall grazer with nominal 2" wide aperture and regressed borosilicate supertex spread lens.

TYPE: \_\_\_\_\_

JOB: \_\_\_\_\_

SPECIFIER: \_\_\_\_\_

**SPECIFICATIONS**

**HOUSING** - Extruded aluminum with seamless welded and ground end plates.

**MOUNTING** - Surface mounted.

**ELECTRICAL** - Fixture comes with 10' whip of 10 Ga. wire for connection to remote transformer. Transformer should be sized for the run length and ordered separately.

**LAMP** - ALR-12 (GBD), MR-11 (FSS) narrow spot 20w max. supplied by others.

**LABELS** - UL, C-UL, Damp location

**SOCKET** - Precision die formed aluminum socket plate. G4/G6 ceramic socket or nickel plated steel double contact bayonet base with stainless steel spring for optimum contact. High temperature lead wires.

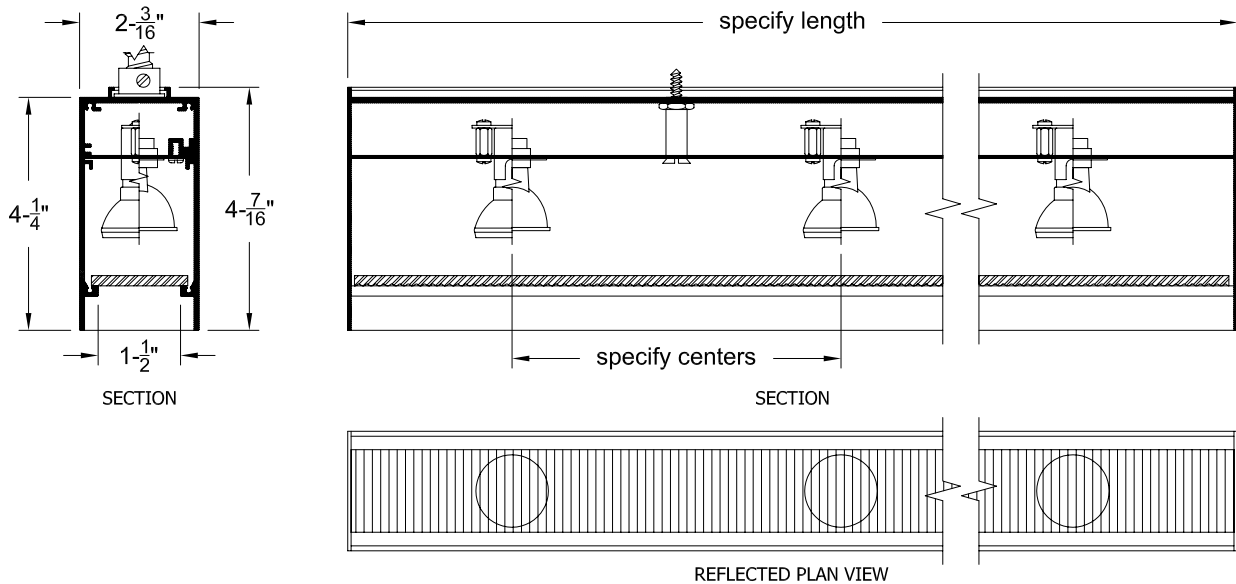
**LENS** - Supertex borosilicate glass. Others available consult factory

**TRIM** - Lens frame integral to housing.

**FINISH** - Powder paint on all surfaces in black and white as standard. Additional colors and RAL palette available. Consult factory for custom finishes.

**APPLICATIONS**

Narrow profile wall grazer used in low to medium ceiling heights to highlight the texture in surfaces such as stucco or brick, illuminate flat surfaces such as venetian plaster, or wood, or light specular surfaces such as polished stone or stainless steel.



**ORDERING INFORMATION**

HOUSING	LAMP SPACING	LENGTH	FINISH	APERTURE LENS
<b>804-__-SH-RX</b>				
Surface housing MR = MR 11 lamp ALR = ALR 12 lamp	4 = 4" 6 = 6" or custom spacing	Specify exact length	WHT = White BLK = Black PXX = SLI Color XXXX = RAL # CST = Custom	91A = Solite 92A = Supertex 93A = Sandblasted 95A = Full Prismatic

This information is provided as a specification aid. A submittal will be prepared by the manufacturer for approval prior to fabricating this product.



**SPECIALTY LIGHTING INDUSTRIES, INC.**

NOTE: These specifications subject to change without notice.

[www.specialtylightingindustries.com](http://www.specialtylightingindustries.com)

1306 DORIS AVENUE, OCEAN, NJ 07712 USA 800.462.7812 732.517.0800 FAX 732.517.0971 © 06/10