

TYPE: _____

JOB: _____

SPECIFICATIONS

HOUSING - Heavy gauge extruded aluminum (material of corrosion resistant alloy.) Aluminum end plate.

ELECTRICAL - MR-16, remote transformer required, sold separately. Maximum 74 watts per foot.

SOCKET - Precision die formed aluminum socket plate. G-4/G-6 with 250°C 600v Teflon coated lead wires.

MOUNTING - Recessed.

LABELS - UL, C-UL -Dry Location.

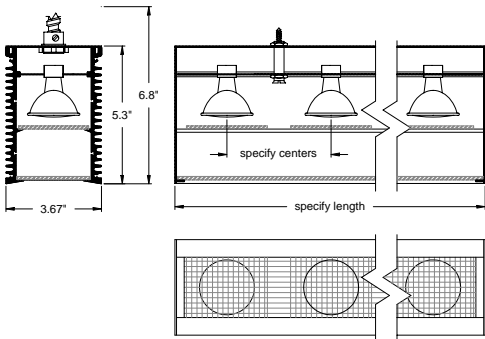
LAMP - MR-16, 12v (narrow spot recommended) - by others.

LENS - Supertex borosilicate glass. Others available consult factory.

FINISH - Black anodized housing. Integral trim, field paintable.

APPLICATIONS

Medium profile, double lensed, recessed in plenum. Intended to highlight surface texture in brick, stone, stucco, tile, textured paint, fabric and wood panels.



ORDERING INFORMATION

FIXTURE	LAMP	LAMP SPACING	LENGTH
#803			
Recessed linear wall grazing system	20MR-16 = 12v, 20w 37MR-16 = 12v, 37w (maximum 74w per foot)	4 = 4" 6 = 6" 8 = 8"	specify exact length



SPECIALTY LIGHTING
INDUSTRIES, INC.

www.specialtylightingindustries.com

1306 DORIS AVENUE, OCEAN, NJ 07712 USA

800.462.7812 732.517.0800 FAX 732.517.0971