

TYPE: _____

JOB: _____

SPECIFICATIONS

HOUSING - Heavy gauge extruded aluminum (material of corrosion resistant alloy.) Aluminum end plate.

ELECTRICAL - PAR30, 120v.

SOCKET - PAR, medium base, porcelain, 500w, 250v.

MOUNTING - Recessed or surface mounted.

LABELS - UL, C-UL -Damp Location.

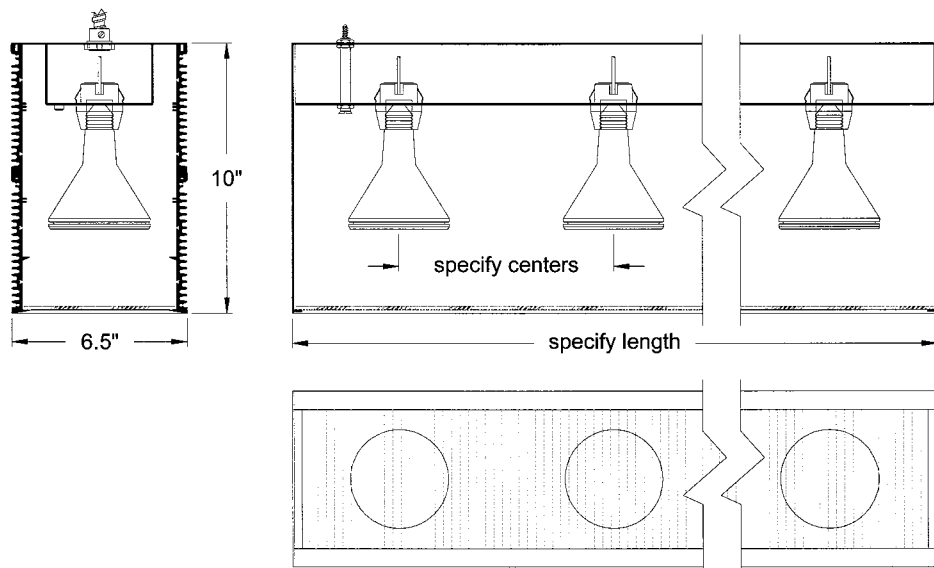
LAMP - PAR 30, 120v (spot recommended) - by others.

LENS - Supertex borosilicate glass. Others available consult factory.

FINISH - Black anodized housing. Integral trim, field paintable.

APPLICATIONS

Large profile, recessed or surface mounted with adjustable angle socket plate. Designed to graze down walls and other flat surfaces by positioning the trim of the fixture housing against the surface to be illuminated. Intended to highlight surface texture in brick, stone, stucco, tile, textured paint, fabric and wood panels.



ORDERING INFORMATION

FIXTURE	LAMP CENTERS	LENGTH
#803 PAR30		
Recessed or surface mounted linear wall grazing system	8 = 8" 10 = 10" 12 = 12"	specify exact length



SPECIALTY LIGHTING INDUSTRIES, INC. ©2004

1306 DORIS AVENUE OCEAN, NJ 07712 800.462.7812 732.517.0800 FAX 732.517.0971 www.specialtylightingindustries.com

These specifications subject to change without notice.