

Multilamp halogen low voltage recessed linear wall grazer with nominal 1.5" wide aperture, borosilicate supertex spread lens in gasketed frame with captive fasteners. Suitable for wet location.

TYPE: \_\_\_\_\_  
 JOB: \_\_\_\_\_  
 \_\_\_\_\_

**SPECIFICATIONS**

**HOUSING** - Extruded aluminum with seamless welded and ground flange.

**MOUNTING** - Recessed in sheetrock or stone ceiling.

**ELECTRICAL** - Fixture comes with 10' whip of 10 Ga. wire for connection to remote transformer. Transformer should be sized for the run length and ordered separately.

**LAMP** - ALR-12 (GBD), MR-11 (FSS) narrow spot 20w max. supplied by others.

**LABELS** - UL, C-UL, Wet location

**SOCKET** - Precision die formed aluminum socket plate. G4/G6 ceramic socket or nickel plated steel double contact bayonet base with stainless steel spring for optimum contact. High temperature lead wires.

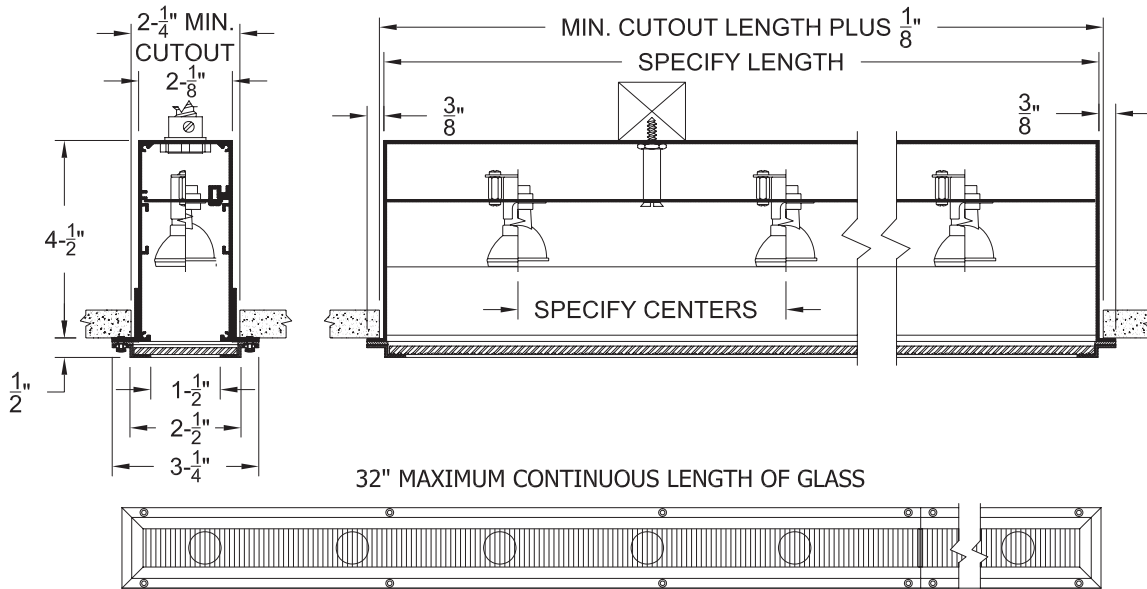
**LENS** - Supertex borosilicate glass. Others available consult factory.

**TRIM** - Flanged aluminum fully gasketed frame with captive fasteners and 1.5" aperture.

**FINISH** - Powder paint on all surfaces available in black white or RAL colors as standard. Consult factory for custom finishes.

**APPLICATIONS**

Narrow aperture wall grazer used in showers or other wet locations to highlight the texture in surfaces such as stucco or brick or illuminate flat surfaces such as stone or metal. May also be used for continuous linear downlighting.



**ORDERING INFORMATION**

HOUSING	LAMP SPACING	LENGTH	FINISH	APERTURE LENS
<b>801SL-__-FH-FT-RX</b>				
Flanged housing MR = MR 11 lamp ALR = ALR 12 lamp	4 = 4" 6 = 6" or custom spacing	Specify exact length	<b>WHT</b> = White <b>BLK</b> = Black <b>XXXX</b> = RAL # <b>CST</b> = Custom (supply chip)	<b>91A</b> = Solite <b>92A</b> = Supertex <b>93A</b> = Sandblasted <b>95A</b> = Full Prismatic

This information is provided as a specification aid. A submittal will be prepared by the manufacturer for approval prior to fabricating this product.



**SPECIALTY LIGHTING INDUSTRIES, INC.**

NOTE: These specifications subject to change without notice.

[www.specialtylightingindustries.com](http://www.specialtylightingindustries.com)

1306 DORIS AVENUE, OCEAN, NJ 07712 USA 800.462.7812 732.517.0800 FAX 732.517.0971 © 2006