

Multi-lamp, low-voltage halogen, recessed linear wall grazer with flanged housing, nominal 1.5" wide aperture and borosilicate supertex spread lens.

TYPE: _____
 JOB: _____

SPECIFICATIONS

HOUSING - Extruded aluminum with seamless welded and ground flange.

MOUNTING - Recessed in architectural ceiling.

ELECTRICAL - Fixture comes with 10' whip of 10 Ga. wire for connection to remote transformer. Transformer should be sized for the run length and ordered separately.

LAMP - ALR-12 (GBD), MR-11 (FSS) narrow spot 20w max. supplied by others.

LABELS - UL, C-UL

SOCKET - Precision die formed aluminum socket plate. G4/G6 ceramic socket or nickel plated steel double contact bayonet base with stainless steel spring for optimum contact. High temperature lead wires.

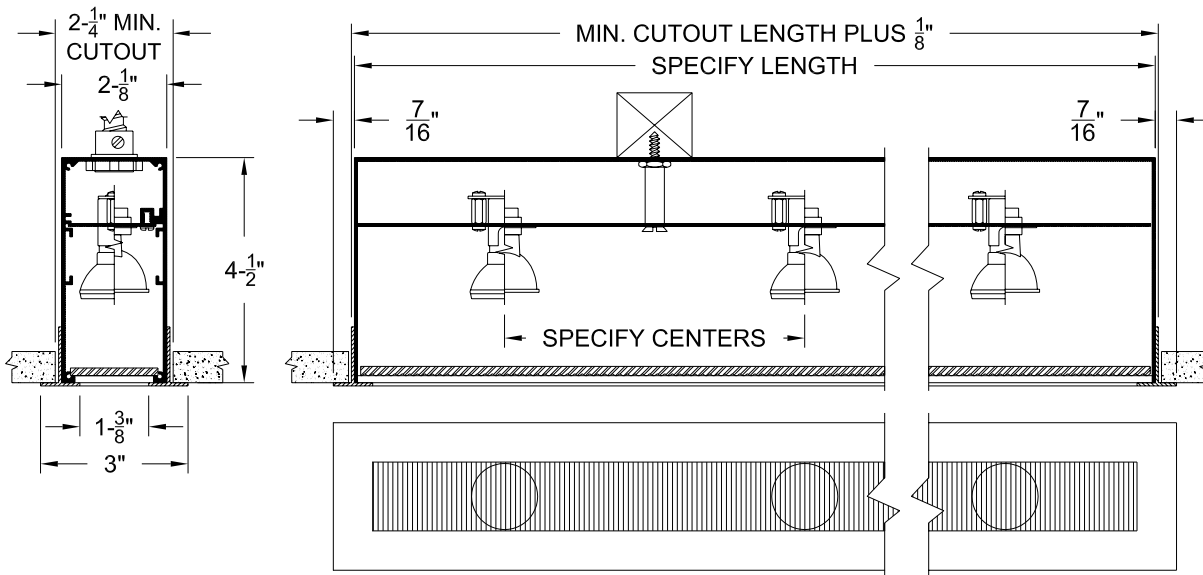
LENS - Supertex borosilicate glass. Others available consult factory.

TRIM - Extruded aluminum overlap flange.

FINISH - Black powder paint housing. Aperture trim available in black white or RAL colors as standard. Consult factory for custom finishes.

APPLICATIONS

Narrow profile wall grazer used in low to medium ceiling heights to highlight the texture in surfaces such as stucco or brick, illuminate flat surfaces such as venetian plaster, fabric or wood, or specular surfaces such as polished stone or stainless steel.



ORDERING INFORMATION

HOUSING	LAMP SPACING	LENGTH	FINISH	APERTURE LENS
801-__-SH-RX				
Flanged housing MR = MR 11 lamp ALR = ALR 12 lamp	4 = 4" 6 = 6" or custom spacing	Specify exact length	WHT = White BLK = Black XXXX = RAL # CST = Custom (supply chip)	91A = Solite 92A = Supertex 93A = Sandblasted 95A = Full Prismatic

This information is provided as a specification aid. A submittal will be prepared by the manufacturer for approval prior to fabricating this product.



SPECIALTY LIGHTING INDUSTRIES, INC.

NOTE: These specifications subject to change without notice.

www.specialtylightingindustries.com

1306 DORIS AVENUE, OCEAN, NJ 07712 USA 800.462.7812 732.517.0800 FAX 732.517.0971 © 2006