

TYPE: _____
 JOB: _____

SPECIFICATIONS

HOUSING - Heavy gauge extruded aluminum/brass (material of corrosion resistant alloy. Welded aluminum/brass end plate, no visible seam).

REFLECTOR - Semi-specular, low iridescence, aluminum.

ELECTRICAL - T-3, remote transformer required, sold separately.

SOCKET - G-4/G-6 with 250°C 600v Teflon coated lead wires.

MOUNTING - Cantilevered, see mounting options next page.

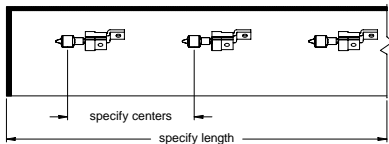
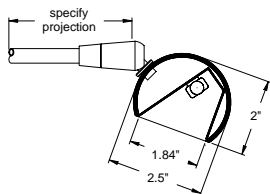
LABELS - UL, CUL, Dry Location.

LAMP - T-3, 12v, frosted - by others.

FINISH - Powder paint, brass, or aluminum. Lacquer top coat. RAL colors standard, consult factory for custom finishes.

APPLICATIONS

Art lighting designed to evenly illuminate standard size works of art (up to 4' tall.) Can also be used as indirect ceiling/ceiling lighting.



ORDERING INFORMATION

FIXTURE	LAMP	LAMP SPACING	LENGTH	PROJECTION	MOUNTING OPTIONS									
#204														
Picture light	5T3 = T-3, 5w, 12v 10T3 = T-3, 10w, 12v	4 = 4" 6 = 6" CST = Custom (consult factory)	specify exact length	specify exact length	A = Cord & plug B = J-box C = Through panel D = Desk/lectern E = End swivel									
FINISH														
<table border="0"> <tr> <td>WHT = White</td> <td>PA = Polished aluminum</td> <td>PB = Polished brass</td> </tr> <tr> <td>BLK = Black</td> <td>SA = Satin aluminum</td> <td>SB = Satin brass</td> </tr> <tr> <td>XXXX = RAL #</td> <td>CST = Custom paint (must supply chip)</td> <td>AB = Antique brass</td> </tr> </table>						WHT = White	PA = Polished aluminum	PB = Polished brass	BLK = Black	SA = Satin aluminum	SB = Satin brass	XXXX = RAL #	CST = Custom paint (must supply chip)	AB = Antique brass
WHT = White	PA = Polished aluminum	PB = Polished brass												
BLK = Black	SA = Satin aluminum	SB = Satin brass												
XXXX = RAL #	CST = Custom paint (must supply chip)	AB = Antique brass												



SPECIALTY LIGHTING
 INDUSTRIES, INC.