

TYPE: _____
 JOB: _____

SPECIFICATIONS

HOUSING - Heavy gauge extruded aluminum/brass (material of corrosion resistant alloy. Welded aluminum/brass end plate, no visible seam.

REFLECTOR - Semi-specular, low iridescence, aluminum.

ELECTRICAL - T-4/DC, 120v.

SOCKET - Double contact bayonet, 125v 500w, 18ga 600v, 200°C silicone wire.

MOUNTING - Cantilevered, see mounting options next page.

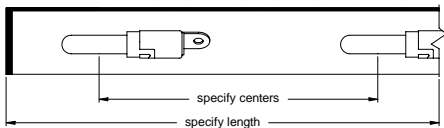
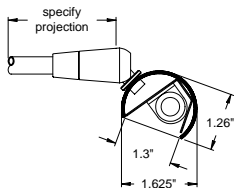
LABELS - UL, CUL, Dry Location.

LAMP - T-4/DC, 120v, frosted - by others.

FINISH - Powder paint, brass, or aluminum. Lacquer top coat. RAL colors standard, consult factory for custom finishes.

APPLICATIONS

Art lighting designed to evenly illuminate standard size works of art (up to 4' tall.) Can also be used as indirect ceiling/cove lighting.



ORDERING INFORMATION

FIXTURE	LAMP	LAMP SPACING	LENGTH	PROJECTION	MOUNTING OPTIONS
#201					
Picture light	20T4 = T-4, 20w, 120v	4.5 = 4.5" 6 = 6"	specify exact length	specify exact length	A = Cord & plug B = J-box C = Through panel D = Desk/lectern E = End swivel

FINISH

WHT = White	PA = Polished aluminum	PB = Polished brass
BLK = Black	SA = Satin aluminum	SB = Satin brass
XXXX = RAL #	CST = Custom paint (must supply chip)	AB = Antique brass



SPECIALTY LIGHTING
 INDUSTRIES, INC.