

SPECIFICATIONS

**HOUSING** - Heavy gauge extruded aluminum (material of corrosion resistant alloy.) Aluminum end plate.

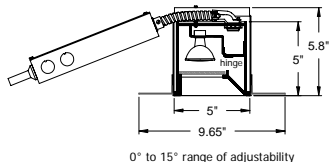
**ELECTRICAL** - MR-16, integral electronic transformer, thermal protector, standard.

**SOCKET** - Precision die formed aluminum socket plate. G-4/G-6 with 250°C 600v Teflon coated lead wires.

**MOUNTING** - Recessed, for plaster ceiling.

APPLICATIONS

Large profile, recessed, intended to graze down walls and other flat surfaces by positioning the trim of the fixture housing near the surface to be illuminated.

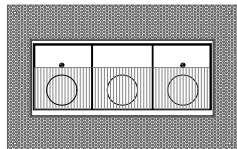
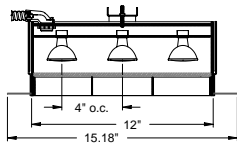


**LABELS** - UL, C-UL -Dry Location.

**LAMP** - MR-16, 12v (narrow spot recommended) - by others.

**LENS** - Supertex borosilicate glass. Others available consult factory.

**FINISH** - Powder paint on all surfaces. RAL colors standard, consult factory for custom finishes.



ORDERING INFORMATION

FIXTURE	LAMP	FINISH
#1300		
Recessed linear adjustable wall grazing system	20MR-16 = 12v, 20w 37MR-16 = 12v, 37w	WHT = White BLK = Black XXXX = RAL # CST = Custom (must supply chip)



SPECIALTY LIGHTING  
INDUSTRIES, INC.

www.specialtylightingindustries.com

1306 DORIS AVENUE, OCEAN, NJ 07712 USA

800.462.7812

732.517.0800

FAX 732.517.0971