

TYPE: _____

JOB: _____

SPECIFICATIONS

HOUSING - Heavy gauge extruded aluminum (material of corrosion resistant alloy.)
Welded aluminum end plate, no visible seam.

REFLECTOR - Semi-specular, low iridescence, aluminum.

ELECTRICAL - T3, remote transformer required, sold separately. Available with optional integral electronic transformer (for 4" or 6" socket centers only.)

SOCKET - G-4/G-6 with 250°C 600v Teflon coated lead wires.

MOUNTING - Surface, provide proper support.

LABELS - UL, C-UL -Dry Location.

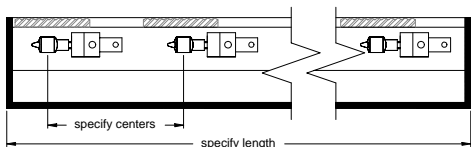
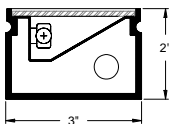
LAMP - T3, 12v, 5w, 10w and 20w - by others.

LENS - Supertex borosilicate glass. Others available consult factory.

FINISH - Powder paint on all surfaces.
RAL colors standard, consult factory for custom finishes.

APPLICATIONS

Small profile, surface mounted cove light.



ORDERING INFORMATION

FIXTURE	LAMP	LAMP SPACING	LENGTH	FINISH
#106				
Surface mounted cove light	5T3 = 5w, 12v, halogen bi-pin 10T3 = 10w, 12v, halogen bi-pin 20T3 = 20w, 12v, halogen bi-pin	3 = 3" 4 = 4" 6 = 6"	specify exact length	WHT = White BLK = Black XXXX = RAL # CST = Custom (must supply chip)



SPECIALTY LIGHTING INDUSTRIES, INC.

www.specialtylightingindustries.com

1306 DORIS AVENUE, OCEAN, NJ 07712 USA

800.462.7812

732.517.0800

FAX 732.517.0971