

TYPE: \_\_\_\_\_  
 JOB: \_\_\_\_\_  
 \_\_\_\_\_

**SPECIFICATIONS**

**HOUSING** - Heavy gauge extruded aluminum (material of corrosion resistant alloy.) Welded aluminum end plate, no visible seam.

**REFLECTOR** - Semi-specular, low iridescence, aluminum.

**ELECTRICAL** - T3, remote transformer required, sold separately. Available with optional integral electronic transformer (for 4" or 6" socket centers only.)

**SOCKET** - G-4/G-6 with 250°C 600v Teflon coated lead wires.

**MOUNTING** - Surface, provide proper support.

**LABELS** - UL, C-UL - Dry Location.

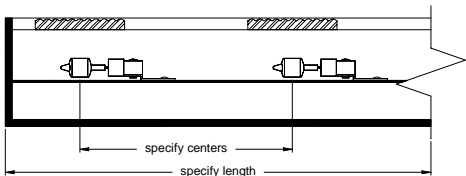
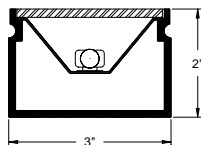
**LAMP** - T3, 12v, 5w, 10w and 20w - by others.

**LENS** - Supertex borosilicate glass. Others available consult factory.

**FINISH** - Powder paint on all surfaces. RAL colors standard, consult factory for custom finishes.

**APPLICATIONS**

Small profile, surface mounted cove light.



**ORDERING INFORMATION**

FIXTURE	LAMP	LAMP SPACING	LENGTH	FINISH
<b>#106S</b>				
Surface mounted cove light	<b>5T3</b> = 5w, 12v, halogen bi-pin <b>10T3</b> = 10w, 12v, halogen bi-pin <b>20T3</b> = 20w, 12v, halogen bi-pin	<b>3</b> = 3" <b>4</b> = 4" <b>6</b> = 6"	specify exact length	<b>WHT</b> = White <b>BLK</b> = Black <b>XXXX</b> = RAL # <b>CST</b> = Custom (must supply chip)



**SPECIALTY LIGHTING INDUSTRIES, INC.**