

TYPE: _____
 JOB: _____

SPECIFICATIONS

HOUSING - Heavy gauge extruded aluminum (material of corrosion resistant alloy.) Welded aluminum end plate, no visible seam.

ELECTRICAL - ALR, integral electronic transformer. Remote transformer available, consult factory.

SOCKET - Precision die formed aluminum socket plate. Nickel plated steel, single contact, bayonet base with stainless steel spring for optimum contact, 250°C 125v 500w Teflon coated lead wires.

MOUNTING - Surface, provide proper support.

LABELS - UL, C-UL, Dry Location.

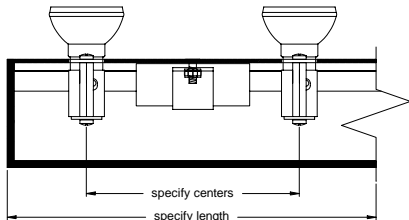
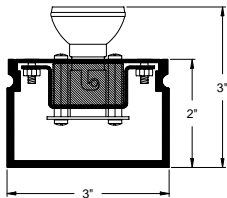
LAMP - ALR-12, 12v (narrow spot recommended) - by others.

LENS - Supertex borosilicate glass. Others available consult factory.

FINISH - Powder paint on all surfaces. RAL colors standard, consult factory for custom finishes.

APPLICATIONS

Small profile, surface mounted cove light.



ORDERING INFORMATION

FIXTURE	LAMP	LAMP SPACING	LENGTH	FINISH
#106S				
Surface mounted cove light	20ALR-12 = ALR-12, 12v, 20w 50ALR-12 = ALR-12, 12v, 50w	4 = 4" 6 = 6" CST = Custom, consult factory	specify exact length	WHT = White BLK = Black XXXX = RAL # CST = Custom (must supply chip)



SPECIALTY LIGHTING
 INDUSTRIES, INC.