

TYPE: _____

JOB: _____

SPECIFICATIONS

HOUSING - Heavy gauge extruded aluminum (material of corrosion resistant alloy.)

ELECTRICAL - MR-16, remote transformer required, sold separately.

MOUNTING - Recessed, in concrete, for drive-over locations. Not to be recessed in soil.

LABELS - ETL and C-ETL, - Wet Location.

LAMP ASSEMBLY - Precision CNC machined aluminum lamp assembly. Ceramic socket (250°C 600v Teflon coated lead wires.)

LAMP - MR-16, 12v - by others.

TRIM - 6.6" diameter, 1/2" thick, CNC machined solid aluminum, with 3 stainless steel screws.

GASKET - Sealed with high temperature silicone o-ring gasket.

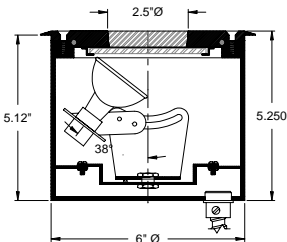
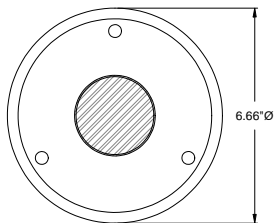
LENS - Supertex, borosilicate glass, and clear Pyrex protective cover.

HOUSING FINISH - Polyester black powder coat for mar-resistance and increased weatherability.

TRIM FINISH - Powder paint. RAL colors standard, consult factory for custom finishes.

APPLICATIONS

Round aperture, recessed wall wash. Perfect for outdoor wall wash applications.



ORDERING INFORMATION

FIXTURE	LAMP	TRIM FINISH
#1002-6S		
Recessed adjustable wall wash	20MR-16 = 12v, 20w 37MR-16 = 12v, 37w	WHT = White BLK = Black XXXX = RAL # CST = Custom (must supply chip)



SPECIALTY LIGHTING
INDUSTRIES, INC.

www.specialtylightingindustries.com

1306 DORIS AVENUE, OCEAN, NJ 07712 USA

800.462.7812

732.517.0800

FAX 732.517.0971